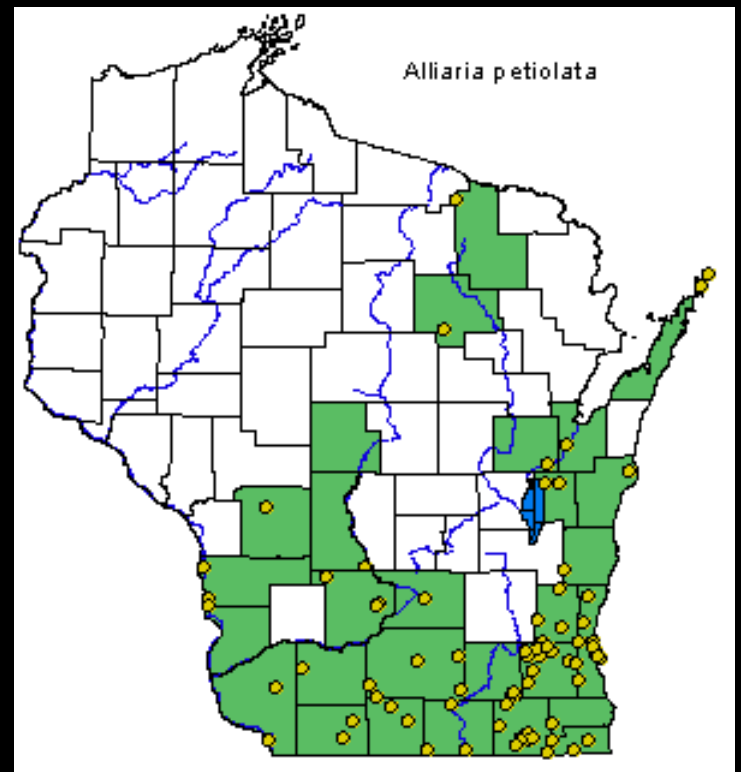


Garlic Mustard Removal Program, Leopold Memorial Reserve





MONITORING

(can be done at any time of year when new patches can be noticed)

- Placed numbered flag at each patch
- Entered GPS location for mapping (or hand-mark on map or aerial photo)
- Measure diameter of patch
- Assess density of patch



TOOLS

Flags for marking new patches

Set of last year's maps for locating old patches and marking new ones

6' PVC pipe marked off in 1' increments to measure diameter of plots

Permanent marker to number flags (fat tip)





First Visit: Treatment by herbicide

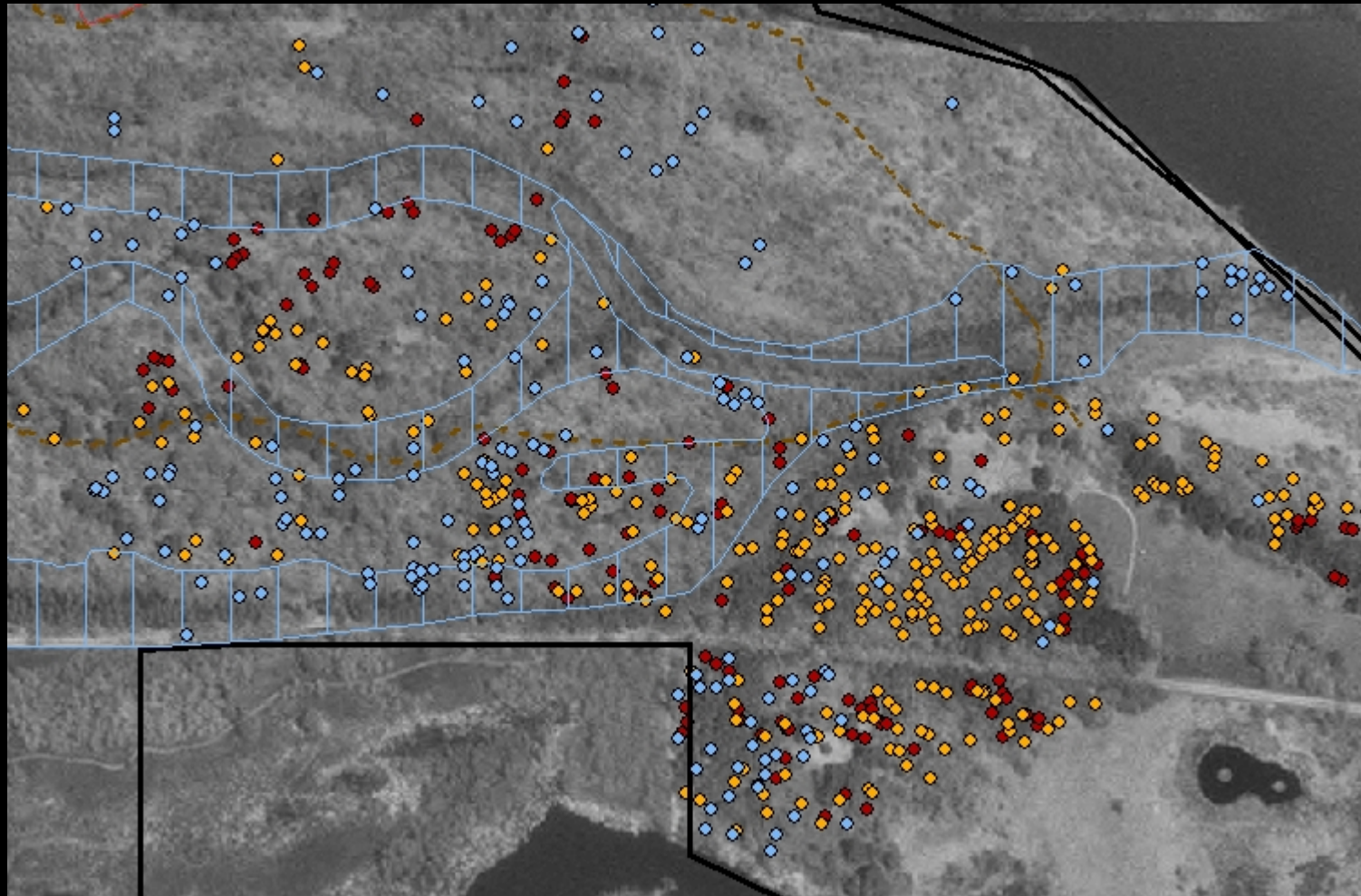
First treatment to all known patches takes place as early as possible in spring before native vegetation is up so that herbicide can be most safely used. Careful application of herbicide later into season or on advanced (large, dense) patches also possible.

Second Visit: Treatment by hand-pulling

Second treatment revisits all the same plots again to re-check and make sure no plants were missed. Any plants found are hand-pulled to protect native vegetation.



Garlic Mustard Patches on the Leopold Memorial Reserve



GPS points can be put on map to revisit sites each year. Different colors indicate the year the patch was noticed and can help track the spread. Hand-drawn maps are also useful if GPS is unavailable.